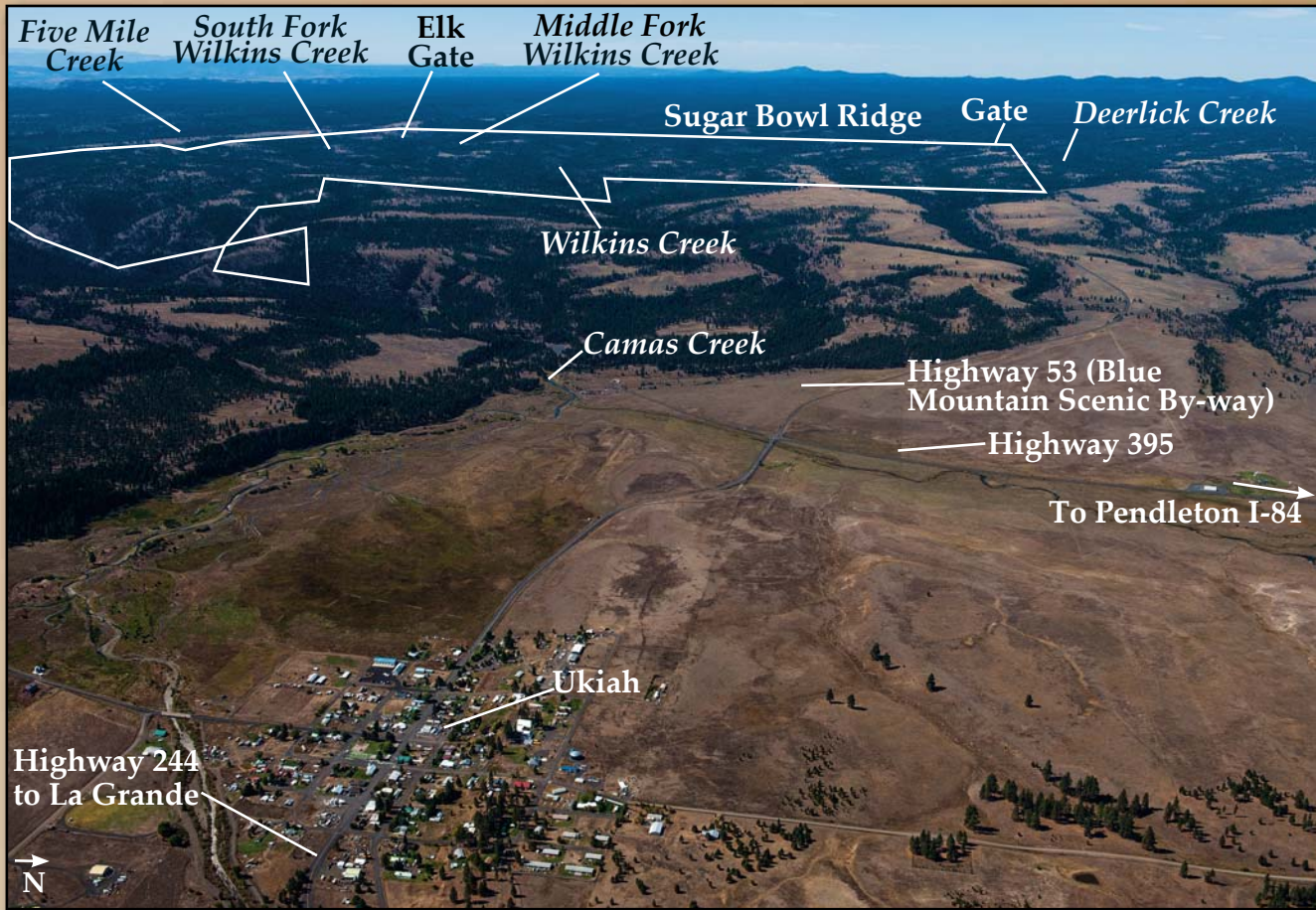


200 Wilkins Creek Umatilla County, Oregon



View of Wilkins Creek from Ukiah

PUBLISHED RESERVE:

\$2,100,000 / \$395 per Acre

SIZE: 5,309± GIS Acres

ELEVATION: 3,500± to 4,500± Feet

HUNTING UNIT: Heppner

ZONING: GF – Grazing/Farm Zone with CWR (Critical Winter Overlay)*

DESCRIPTION: Wilkins Creek is located eight miles west of Ukiah, along a ridge between Five Mile Creek Drainage and Highway 53, part of the Blue Mountain Scenic By-Way which provides access west to Heppner and east to La Grande, on Highway 244. The property is a contiguous block of private ownership, with Wilkins Creek and its two tributaries creating a total of three drainages, which, in combination with the ridge top in the southwest section, provides excellent hunting habitat for both elk and deer. The Seller has not leased the property for hunting.

Access to both the northwest and southwest is from Highway 53. USFS Road 5309 provides access to the southwest corner by Elk Gate. USFS Road 5310 provides access to the northwest corner of the property. Elevations range from 3,500



Large meadow by Elk Gate could accommodate airstrip and base camp