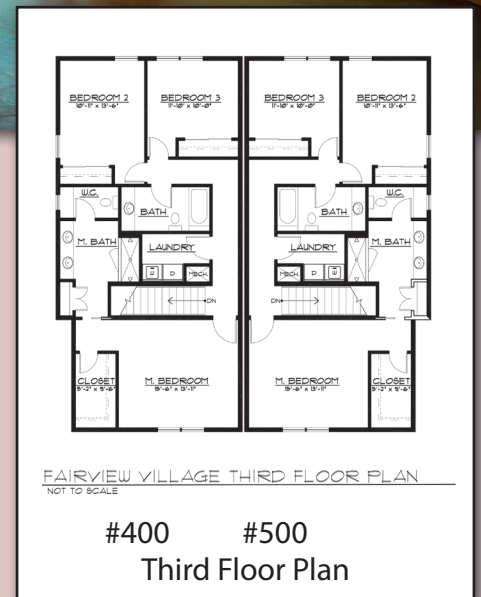
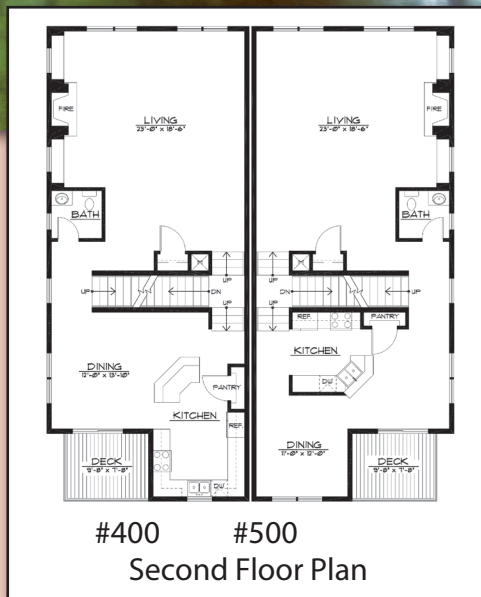
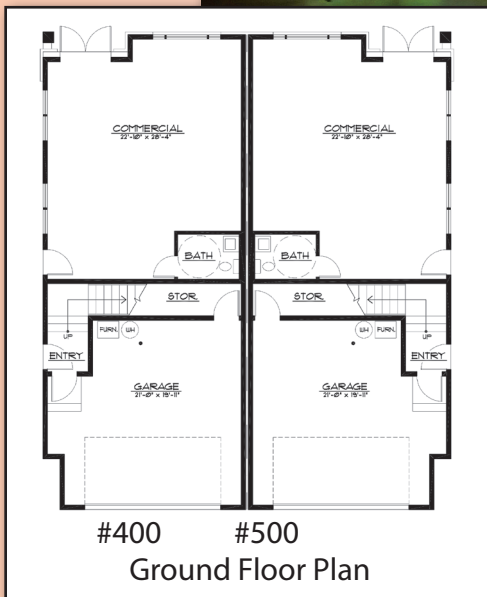


Commercial space is finished, and ready for use



HOMEOWNER ASSOCIATIONS

Buyers of Auction Property #100 and #200 will become members of West Market Square Homeowner Association and Buyers of Auction Properties #300, #400 and #500 will become members of Market Drive Commons Homeowner Association. Both have been established for exterior maintenance of each townhome, all exterior landscape areas and irrigation costs, and additional property management costs. Monthly assessments are estimated to be \$165.

TAXES

The 2012-2013 taxes, per auction property, were as follows:

| # | Taxes |
|-----|---------|
| 100 | \$5,082 |
| 200 | \$5,034 |
| 300 | \$4,380 |
| 400 | \$4,547 |
| 500 | \$4,562 |