

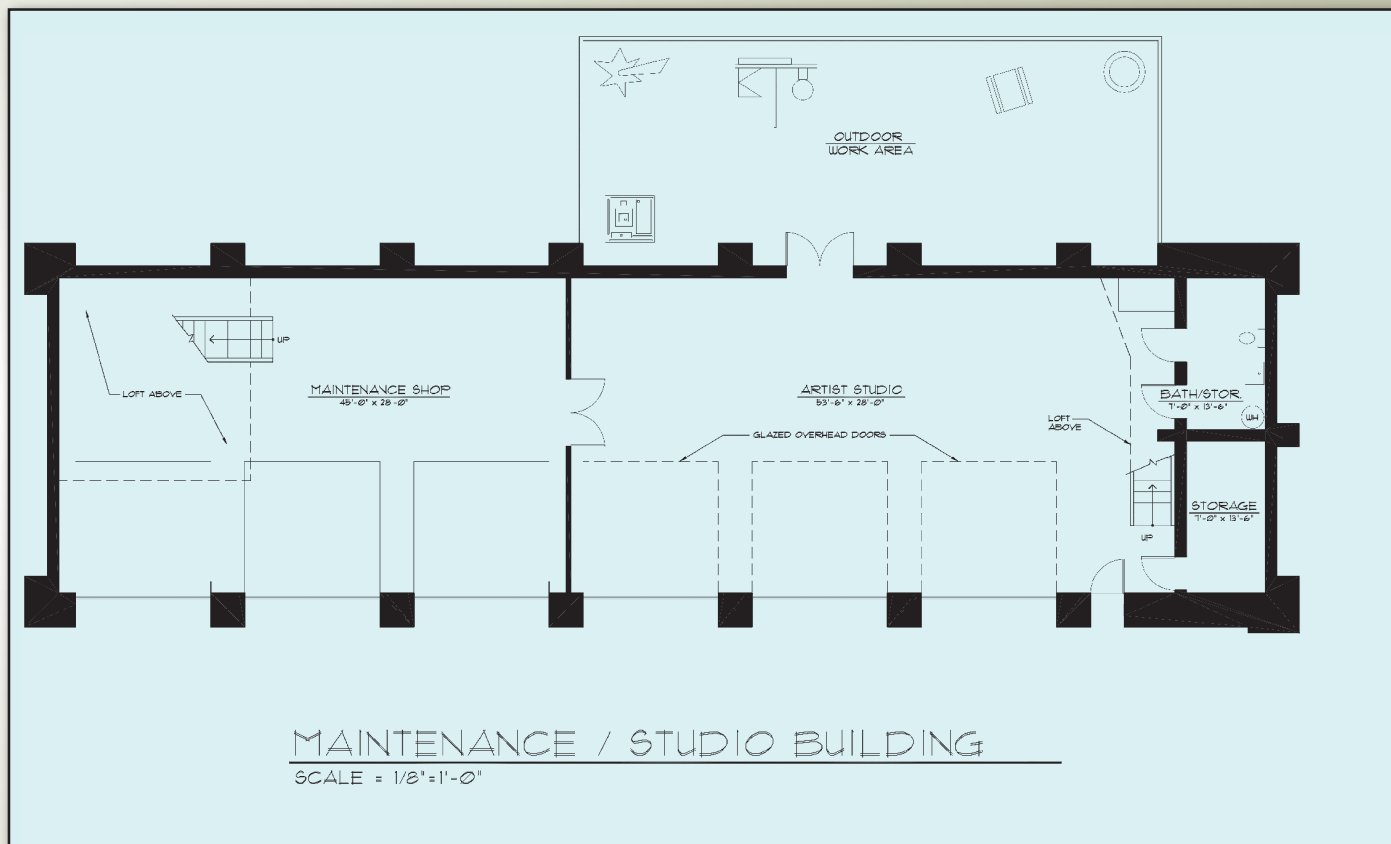
Maintenance/Studio

The 3,885± square foot maintenance shop is located between the two residences, along the entry road, and has six overhead doors with large, heated, work area, small office, half bathroom, and loft with storage area. There is a hydraulic lift for maintenance vehicles. This maintenance building could easily be re-used for a combination of artist studios and property maintenance with the addition of glazed overhead doors for up to three bays, in order to provide light, and there is room for construction of an outdoor work area. The Maintenance Shop is being sold with a riding lawn mower, tractor and Honda ATV Quad. Also, there are two above-ground fuel tanks for fueling the equipment.

The level area between the maintenance shop and caretaker home could easily accommodate a horse barn and paddock, providing opportunity for riding throughout the property, as well as along the entry road to the beach by Cape Meares.



Six overhead doors with large heated work area, office, loft and half bathroom, with opportunity to re-use portion as an artist studio or workshop.



Potential to re-use portion of maintenance shop for artist studio with outdoor work area

For Supplemental Information Package with Bid Documents Call

800-845-3524